



ASHLEY SCHOLARS LANDING II
Atlanta, GA

McSHANE
CONSTRUCTION

COMMONGROUND



JASON BREDEN
Vice President & Director of Nashville Operations

Growing the McShane Legacy in Nashville

When we opened our Nashville office in 2021, it marked more than a geographic expansion. It was the natural next step in a relationship that was years in the making.

Before establishing a physical presence, we were already active in the Middle Tennessee market. Our Southeastern regional team, based in Auburn, delivered several Nashville-area projects, building strong client relationships and gaining firsthand insight into the region's development potential. In 2020, I had the opportunity to build a senior living community in Hendersonville, Tennessee, for a repeat client. The success of this project reinforced our confidence in the market and underscored the value of investing in Nashville.

Nashville's growth story is well documented. Rapid population growth, new employment opportunities, and sustained in-migration have fueled demand across nearly every property sector, particularly housing. That demand aligns closely with our long-standing expertise in multi-family construction. Establishing a local office enabled us to better support national clients who were expanding into the region while creating new opportunities to collaborate with local development partners.

Beyond strong market fundamentals, Nashville offered a natural fit. The city's collaborative, relationship-driven business culture mirrors McShane's values, where trust and long-term partnerships are the foundation of success. Much like our early growth in other areas of the country, we focused on becoming part of the local landscape by meeting people face to face, building credibility over time, and contributing meaningfully to the community.

Putting down roots in Nashville allowed us to expand the McShane legacy into a region defined by opportunity and character. That decision continues to pay dividends as we grow alongside the region and deepen our role in shaping communities in Middle Tennessee.

Jason Breden
Vice President & Director of Nashville Operations

Spring 2026
What's Inside

PAGE 2
Construction Continues at Apartments in Illinois

PAGE 2
Featured Team Member

PAGE 3
Ellison Cool Springs Nears Completion in Tennessee

MIDWEST REGION

Construction Continues at 138-unit Apartment Community in Downers Grove, Illinois

Construction continues at 750 Curtiss, a 138-unit apartment complex located near downtown Downers Grove, Illinois.

The six-story building will offer four stories of apartments atop a precast parking garage. Units will incorporate a mix of studio, one-, two-, and three-bedroom layouts, along with five exclusive two-bedroom, two-bathroom direct-entry townhomes. Interior features will include quartz countertops, stainless-steel appliances, in-unit laundry, luxury wood-look flooring, and private balconies in select units.

Residents can enjoy an extensive amenity package including a clubroom, reservable event space, a fitness center, and co-working hubs. Outside, there will be a pool with lounge seating, fire pits, and grill stations, as well as a dog wash and run. A two-story parking garage will hold 182 parking spaces and an indoor bicycle storage room.

> For more information in the Midwest, contact [David Rintz](#)



SOUTHEAST REGION

Workforce Housing Community Underway in Chattanooga, Tennessee

Construction is underway at 702 Manufacturers, a 278-unit workforce housing community for The Atlantic Companies. The development will serve essential members of the workforce, such as teachers, nurses, and first responders.

Located along the Tennessee River in Chattanooga, Tennessee, this development will be comprised of four wood-frame buildings and one podium-style building atop a single-story parking garage.

Designed by Brock Hudgins Architects, units will be offered in studio, one-, and two-bedroom layouts with high-end features including stainless-steel appliances, quartz countertops, and luxury vinyl-tile flooring.

Amenities will include a sky lounge and terrace overlooking the river, a swimming pool, clubroom, entertainment bar, fitness center, yoga room, and pet spa. The development is slated to achieve NGBS Silver certification.

> For more information in the Southeast, contact [Dave Meadows](#)

> FOR PROJECT UPDATES, NEWS, AND INDUSTRY INSIGHTS, FOLLOW US ON: [in](#) [f](#) [X](#) [@](#)

FEATURED TEAM MEMBER

John Mance – Senior Superintendent

As Senior Project Superintendent, John oversees daily site operations on projects across the Chicago area, ensuring projects are delivered safely, on schedule, and in line with McShane's rigorous quality standards.

John has been with McShane since 1995 and recently celebrated his 30th anniversary at the company. Over the past three decades, he has contributed to nearly 30 projects in the multi-family, industrial, commercial, and health & fitness market sectors totaling 4.2 million square feet.

John is recognized for his longtime relationships with project management staff, architects, consultants, subcontractors, and suppliers. John's expert control, communication skills, and on-site supervision enhance teamwork, attention to quality, and precise schedule management for any project he supports.



NASHVILLE REGION

Ellison Cool Springs Nears Completion in Franklin, Tennessee

McShane is nearing completion at Ellison Cool Springs, a mixed-use development offering 332 apartments and 15 ground-floor commercial units in Franklin, Tennessee, for repeat client Flournoy Development Group.

Open-concept apartments boast quartz countertops, luxury vinyl-plank flooring, stainless-steel appliances, contemporary lighting fixtures, keyless entry, and walk-in closets. Select units feature private patios or balconies, walk-in showers, mudroom storage areas, and flex dens or home office spaces.

A luxury amenity package includes a heated saltwater pool, outdoor courtyards with fire pits and grill stations, a hammock garden, dog park, pet spa, co-working lounge, grab-and-go market, and fitness and wellness center. Inspired by its proximity to Nashville, the complex also offers a content creation studio ideal for podcasting, video, or music production.

> For more information in Nashville, contact [Jason Breden](#)



WISCONSIN REGION

Brookfield, Wisconsin's First Affordable Housing Development Completed

Construction is completed at The Flats at Bishop's Woods, a 203-unit affordable housing development delivered on behalf of repeat client Lincoln Avenue Communities. The Flats at Bishop's Woods is Brookfield, Wisconsin's first fully affordable housing community, with apartments offered at 50 to 70 percent of area median income.

Designed by Knothe & Bruce Architects, units feature granite countertops, stainless-steel appliances, luxury vinyl-plank flooring, and kitchen islands. There are eight live/work units for residents who wish to have an in-home office or studio.

Community amenities include a community room with a kitchen, outdoor grilling patio, playground, fitness center, Zoom rooms, and bike storage. The development achieved Wisconsin Green Built Home Certification by utilizing rooftop solar panels, high-efficiency electric heat pump systems, and energy-efficient appliances.

> For more information in Wisconsin, contact [Alison Gorham](#)

QUICK HITS



CTK Jesuit College Prep Gala

Members of our Chicago team attended the annual King of Hearts Gala in support of the students at Christ the King Jesuit College Prep. We're proud to stand with and celebrate the impact of this amazing cause.



McShane Leadership Summit in Auburn

Our Auburn office hosted McShane's annual Leadership Summit, focused on strategic planning, alignment, and growth across teams. They also enjoyed cheering on the Tigers at an Auburn basketball game.



ABC Wisconsin Awards

We attended the ABC Wisconsin Projects of Distinction Banquet and proudly accepted two awards.

Schuetz Container Systems, a 372,000-square-foot built-to-suit facility in Kenosha, won in the industrial category and The Canyons, a 60-unit affordable housing development in Madison, earned an award in the residential category.





ALANNA
Phoenix, AZ

This luxury apartment complex offers 320 units across four buildings and over 10,000 square feet of amenity space.



THE APIARY
West Allis, WI

Positioned on a 4.6-acre site, this 248-unit residential development offers upscale apartment finishes and an extensive amenity package.



CLAIRMONT MULTI-FAMILY
Chamblee, GA

This affordable housing community provides units in one- to three-bedroom floorplans with high-end finishes.



THE CONWAY AT HUXLEY YARDS
Madison, WI

Construction continues at this five-story podium-style building offering four stories of apartments atop an above-grade precast parking garage.



DECLAN HERITAGE
Nashville, TN

This 315-unit apartment community integrates six garden-style buildings with a first-class amenity package.



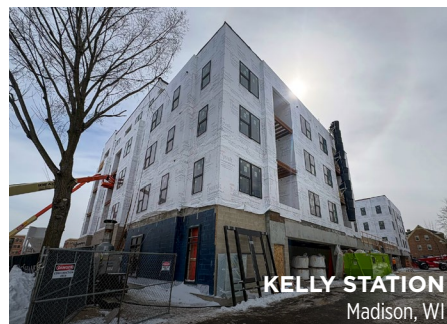
DISTRICT EASTSIDE
Greenville, SC

Construction is nearing completion at District Eastside, a 262-unit multi-family development that includes ten live/work units.



HERNDON SQUARE PHASE III
Atlanta, GA

This multi-family community will bring 178 units to downtown Atlanta as part of a master-planned mixed-income redevelopment initiative.



KELLY STATION
Madison, WI

Designed with sustainability in mind, this 76-unit affordable housing development features a rooftop solar array and an innovative "blue roof" system.



BUILD-TO-SUIT FACILITY
Kenosha, WI

This 174,000-square-foot facility will offer manufacturing, distribution, and office space on a nearly 86-acre site.

CONNECT WITH US ON SOCIAL MEDIA

