



**McSHANE**  
CONSTRUCTION  
C O M P A N Y

# COMMONGROUND



**JASON BREDEN**  
Vice President & Director of Nashville Operations

## Summer 2021 What's Inside

PAGE 2  
**Featured Employee**

PAGE 2  
**Luxury Multi-Family Project  
Completed in Warrenville, IL**

PAGE 3  
**Lotus Project Phase II  
Underway in Phoenix**

## Find Us in Music City

It is with great excitement that I share the opening of our Nashville Regional Office. Over the past 10 years, we have experienced substantial growth in the Southeast, and the addition of a Nashville office will help us better serve both new and existing clients in the region.

In my 21-year tenure at McShane, I have had the privilege of watching the company grow substantially, and it is an honor to be part of yet another significant moment in company history. I am thrilled to build upon McShane's success in the Southeast and look forward to expanding in the region and creating new relationships.

Nashville is a robust and growing market that holds a lot of potential for our company and the construction industry as a whole. With a balance of healthcare, corporate operations, manufacturing and supply chain management, Nashville is one of the country's most attractive growth centers. We see this as an excellent opportunity to focus our expertise on multi-family construction in the region.

We are currently underway with two multi-family projects in the Nashville area: Avenida Indian Lake, a 138-unit active senior living residence in Hendersonville and Novel Harpeth Heights, a 322-unit development in Nashville. Additionally, we recently completed the construction of Parc at Murfreesboro, a 359-unit complex in Murfreesboro.

I am grateful for the support I have received from our clients, partners and friends, and I look forward to the journey ahead.

To learn more about opportunities in Nashville, contact Jason at 615.588.2641 or [jbreden@mcshane.com](mailto:jbreden@mcshane.com).

– **Jason Breden**  
Vice President & Director of  
Nashville Operations



## MIDWEST REGION

### New Luxury Multi-Family Community Completed

Arden Residences in Warrenville, Illinois has been completed. This community offers 364 units in Warrenville's Cantera development.

The property offers 201 one-bedroom, 153 two-bedroom and 10 three-bedroom units wrapped around a central core parking garage with 386 spaces. This strategic configuration allows residents to live and park on the same level for added convenience. Each unit boasts high-end features and finishes including granite countertops, stainless steel appliances, in-unit washers and dryers, walk-in closets and a private balcony or patio.

Residents also have access to an array of best-in-class amenities, such as a turf-style fitness center, yoga studio, business center, library, massage room, sauna and arts and crafts room. Outside, the property includes a swimming pool, barbecue area, dining area, pickleball court and gardening plots.

> For more information in the Midwest, contact [Mat Dougherty](#)



## SOUTHEAST REGION

### Construction Underway on IBM Drive Apartments in Charlotte, NC

McShane Construction Company has broken ground on IBM Drive Apartments in Charlotte, North Carolina. The new 300-unit development is under construction on behalf of repeat client RangeWater Real Estate.

McShane has completed over 1,000 units for RangeWater in Georgia over the last 3 years. IBM Drive Apartments represents their first project together in North Carolina.

This exciting multi-family project will sit on a 28-acre site and include three multi-story wood-framed garden-style apartment buildings and a central clubhouse. In addition, residents will enjoy nearly 10,000 square feet of amenity space, including an outdoor pool and a dog park.

Each well-appointed unit will feature granite and quartz countertops, luxury vinyl tile flooring and modern stainless steel appliances.

> For more information in the Southeast, contact [Scott Hoppa](#)

> TO LEARN MORE ABOUT WORKING WITH US, CONTACT YOUR LOCAL MCSHANE OFFICE

## FEATURED EMPLOYEE

### Ed Rodriguez – Director of Project Management

Ed Rodriguez is the Director of Project Management and works out of McShane's Irvine, California office. He develops and directs project management operations and strategic planning to meet organizational goals. Additionally, he implements established project management standards, processes and procedures including training of staff members.

Ed graduated from Adamson University with a Bachelor of Science in Civil Engineering. He and his team are currently working on 900 Gayley, 38,000-square-foot mixed-use building and IPT 500 Pittsburg, a 481,487-square-foot speculative industrial building.





## SOUTHWEST REGION

### McShane Making Progress on Lotus Project Phase II in Phoenix

Following the successful completion of the first phase of the Lotus Project in Chandler, Arizona, McShane is underway with construction of Phase II. The project adds three industrial buildings totaling nearly 300,000 square feet to the existing four-building Class A industrial park.

The first of the new buildings will incorporate 140,490 square feet with a 32' clear height, 43 dock doors and four drive-in doors. The slightly smaller second building offers 104,742 square feet with a 32' clear height, 38 dock doors and four drive-in doors. The last, and smallest, of the buildings will be 46,866 square feet with a 24' clear height, four dock doors and six drive-in doors. All buildings will offer efficient loading dimensions, ample power, ESFR sprinklers, skylights and abundant parking.

Completion of Lotus Project Phase II is slated for December 2021.

> For more information in the Southwest, contact [Jim Kurtzman](#)



## SOUTHERN WISCONSIN REGION

### McShane to Build 302-Unit Community in Oconomowoc, Wisconsin

Mandel Group has selected McShane Construction Company to provide general construction services for Hackney House Apartments at Pabst Farms. Located in Oconomowoc, Wisconsin, the new development will offer 302 units.

The community will be comprised of 18 two-story garden-style buildings and two three-story townhome buildings that exude a modern farmhouse aesthetic. Inspired by the "mews house" concept, the development is designed to leverage the large site acreage by creating intimate courtyards that offer access to natural environs and encourage resident interaction.

Designed to achieve National Green Building Standard (NGBS) certification, sustainable materials such as board and batten siding, stone masonry and native plants will be used.

Amenities will include a 4,000-square-foot clubhouse with a gourmet-style kitchen and fitness center, an outdoor pool, a grill and patio dining area, a dog wash and bicycle storage.

> For more information in Wisconsin, contact [Alison Gorham](#)

## QUICK HITS



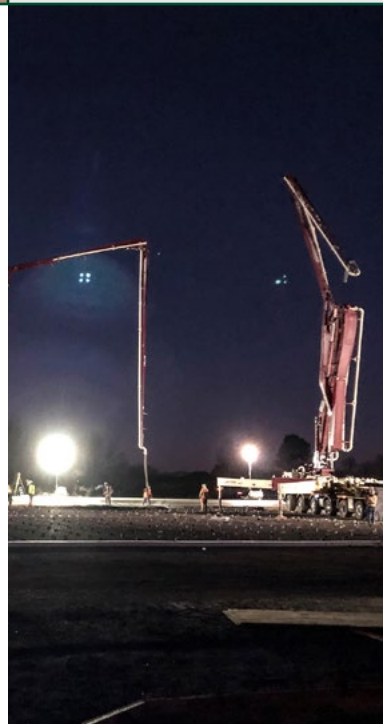
### Molly McShane Named Woman of the Year

Molly McShane was named 2021 Woman of the Year by Illinois Real Estate Journal. In October 2020, Molly became the second CEO in company history and first female CEO, adding to her long list of accomplishments.



### Digi-Key Electronics' PDCe Wins MREJ Awards

Digi-Key Electronics' 2.2 million-square-foot Product Distribution Center expansion in Thief River Falls was a winner at the Minnesota Real Estate Journal Awards in both the Industrial Project and People's Choice categories.



### Overnight Concrete Pours at 500 Pittsburg

Earlier this year, overnight concrete pours took place at 500 Pittsburg, a 481,500-square-foot tilt-wall industrial building in Richmond, California. While pouring concrete at 2 a.m. may seem crazy, it is necessary for projects like 500 Pittsburg where, at one pour, more than 1,000 cubic yards of concrete were poured, requiring approximately 100 truckloads.





This 436,500-square-foot industrial development was recently completed. The cross-dock facility has a 36' clear height and 54 truck docks.



Construction is progressing steadily on this 380-unit multi-family project. The property will offer numerous amenities such as an outdoor pool, spa and dog park.



This luxury residential complex located outside of Nashville includes 359 units across 10 buildings and a central clubhouse with a resort-style swimming pool.



This amenity-rich apartment complex is comprised of 240 units across 10 two-story buildings in a private gated community setting.



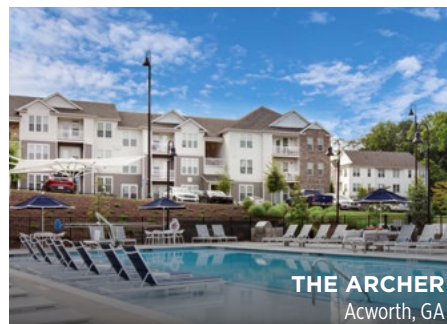
This mixed-use development incorporates 33,317 square feet of office space and 5,182 square feet of ground-floor retail space.



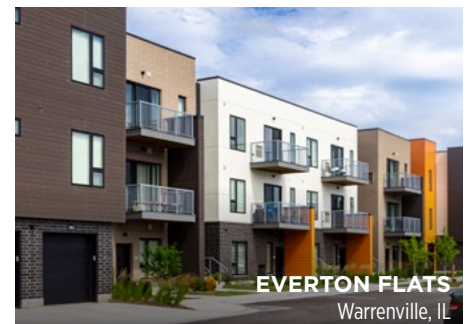
This seven-building development marks the 18th project McShane has completed for repeat client, Continental Properties and the first of four in Arizona.



This three story, 138-unit senior living community will offer 6,000 square feet of amenity space including a clubhouse, fitness center, swimming pool and more.



This 315-unit multi-family community was recently completed. The development offers generous amenities including a resort-style swimming pool.



This seven-building apartment complex includes 259 units. The development includes both attached and detached parking structures and a clubhouse.